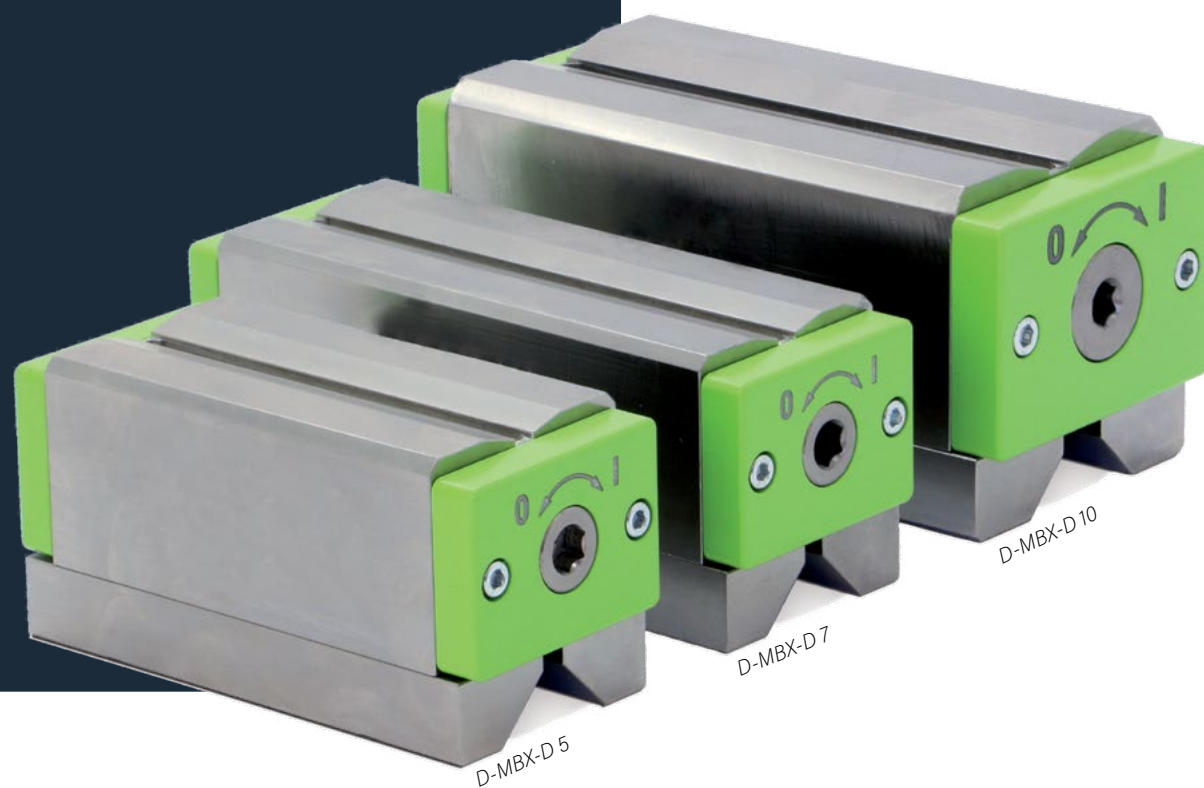


CLAMPING BLOCKS

Magnetic Clamping tool for profiles, flat,- and round materials

D-MBX-D



UMETA
fast. safe. easy.



CLAMPING BLOCKS

Magnetic Clamping tool for profiles, flat,- and round materials

D-MBX-D

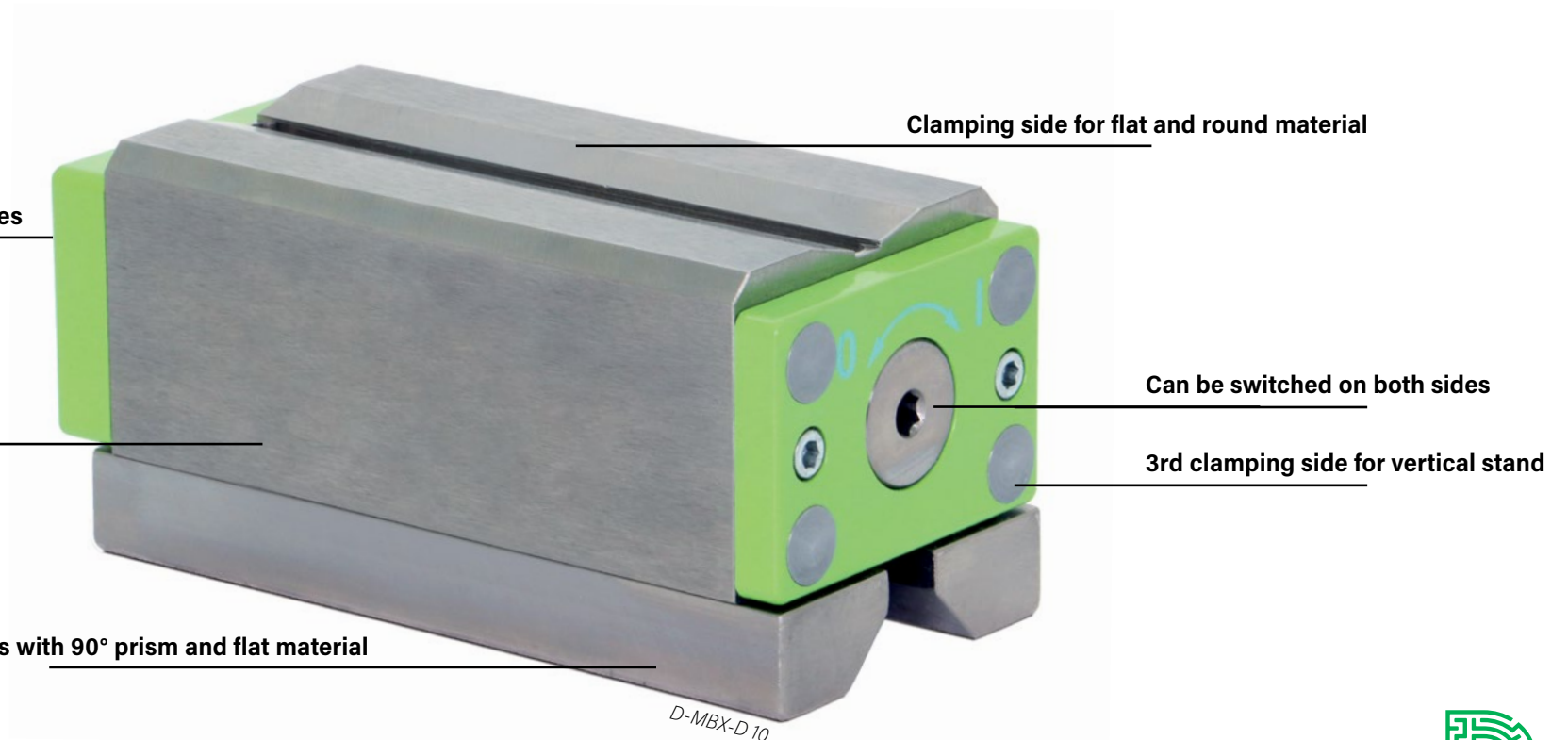
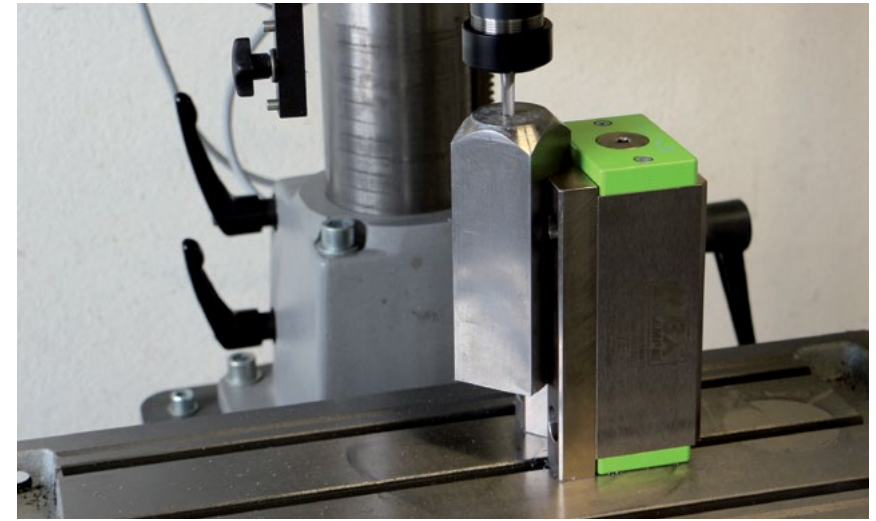
D-MBX-D magnetic clamping blocks have opposing clamping sides that are activated when actuated. They are designed to clamp workpieces onto steel surfaces such as machine or assembly tables.

A number of D-MBX-Ds can also be connected to each other via the hexagonal shank of the switching shaft in order to clamp longer or larger workpieces.

With the two differently-shaped clamping sides of the D-MBX-D almost any workpiece geometry can be held, regardless of whether it is round material, sheets or even profiles that are to be clamped.

The D-MBX-D is an optimal clamping tool to fix welding and deburr work pieces flexibly and free of interference contours in order to facilitate drilling, deburring, polishing, and assembling.

A D-MBX-D magnetic clamping block clamps itself on the table and tensions the workpiece.



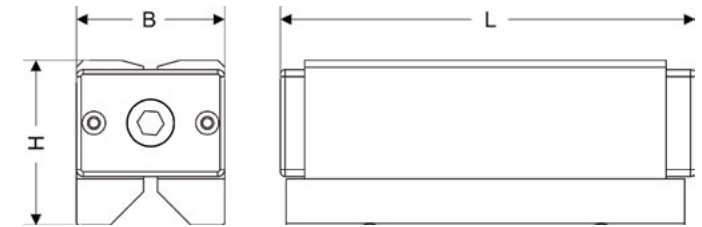
CLAMPING BLOCKS

Magnetic Clamping tool for profiles, flat- and round materials

D-MBX-D

Technical specifications

Model	D-MBX-D 5	D-MBX-D 5 (pair)	D-MBX-D 7	D-MBX-D 7 (pair)	D-MBX-D 10	D-MBX-D 10 (pair)
L (mm)	143	143	178	178	184	184
B (mm)	64	64	64	64	87	87
H (mm)	71	71	71	71	88	88
Clamping surface 1 (mm)	120 x 57	120 x 57	156 x 57	156 x 57	162 x 76	162 x 76
Clamping surface 2 (mm)	136 x 64	136 x 64	172 x 64	172 x 64	178 x 87	178 x 87
Nominal holding force beneath (kN)	5	5	7	7	10	10
Weight (kg)	3,9	2 x 3,9	4,9	2 x 4,9	8,8	2 x 8,8



All information is subject to printing-, typing errors and modifications.

