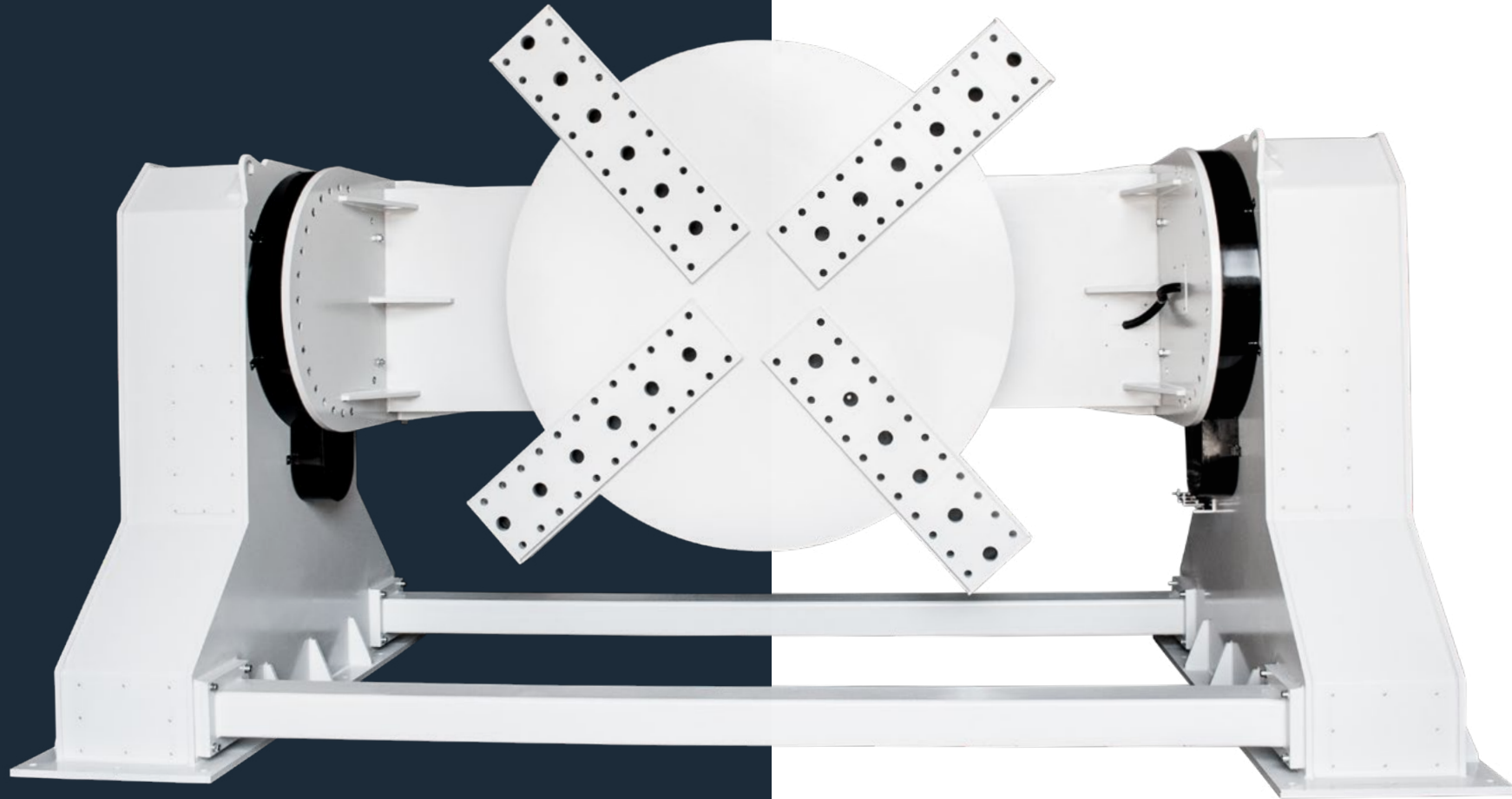


# WELDING POSITIONERS

360° tilting and turning

**D-TLP-DC**



**UMETA**  
fast. safe. easy.

D-TLP-DC-150



# WELDING POSITIONERS

360° tilting and turning

## D-TLP-DC

Positioning and rotating your workpiece with these top-class heavy duty machines will significantly reduce your workpiece handling time and enhance work safety and ergonomics.

The D-TLP-DC welding positioner enables you to tilt the workpiece 360° and even permits upside down positioning.

**The D-TLP-DC positioners can be supplied with a capacity from 5000 kg up to 200 tonnes. We also provide D-TLP-DC positioners that are custom made according to your specific requirements.**

### OPTIONAL

- Foot pedal for adjustable speed
- Radio remote control
- Backlash-free gears and directly mounted servomotor

### FEATURES

- Heavy-duty table with low backlash
- High-quality electronic components from Siemens and Yaskawa
- Stepless adjustable drive speed
- The strong and durable construction creates very high stability
- CE marking
- The favourable price-performance ratio yields to a quick return on your investment
- The standard configuration includes a remote control and a double foot pedal
- 3-year warranty (see warranty conditions)

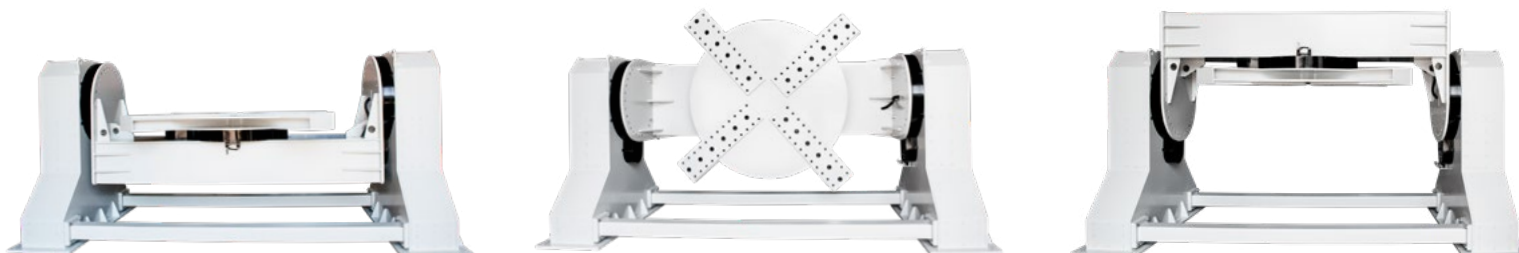
D-TLP-DC-150



# WELDING POSITIONERS

360° tilting and turning

## D-TLP-DC



D-TLP-DC-150

### Technical data

Model	D-TLP-DC-50	D-TLP-DC-100	D-TLP-DC-150	D-TLP-DC-200	D-TLP-DC-300	D-TLP-DC-500	D-TLP-DC-1000
Max. load (kg)	5.000	10.000	15.000	20.000	30.000	50.000	100.000
Table (Ømm)	2.500	2.500	3.000	3.000	3.500	4.000	4.000
Rotation speed (rpm)	0,05-0,5	0,05-0,5	0,04-0,4	0,04-0,4	0,03-0,3	0,02-0,2	0,01-0,1
Tilting angle (°)	360	360	360	360	360	360	360
Max. centre gravity (mm)	600	600	1.000	1.000	1.500	2.000	2.500
Max. eccentricity (mm)	200	200	200	200	200	200	200
Motor power rotation (kW)	3	4	5,5	5,5	7,5	11	18,5
Motor power tilting (kW)	2 x 2,2	2 x 3	2 x 5,5	2 x 5,5	2 x 7,5	2 x 11	2 x 18,5
Max. welding current (A)	700	1.000	1.000	1.000	1.000	1.000	1.000
Power supply	400V, 50/60Hz	400V, 50/60Hz	400V, 50/60Hz	400V, 50/60Hz	400V, 50/60Hz	400V, 50/60Hz	400V, 50/60Hz
Double foot pedal (start/stop-left/right)	Inclusive	Inclusive	Inclusive	Inclusive	Inclusive	Inclusive	Inclusive
Remote control (by wire)	Inclusive	Inclusive	Inclusive	Inclusive	Inclusive	Inclusive	Inclusive

All information is subject to printing-, type errors and modifications.